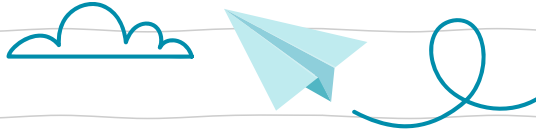
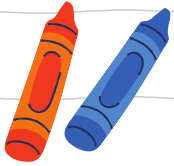


# SUPPLY **BACK TO SCHOOL** DRIVE



## ESSENTIALS:

- Black Sharpies (Regular & Fine Tip)
- Pencils #2
- Pencil Case/Bag
- Erasers
- Dry Ease Markers
- Kids Scissors
- 3-Ring Binder (1" & 1.5")
- Composition Notebooks (Wide & College Ruled)
- Spiral Notebooks (Wide & College Ruled)
- Folders (Pockets)
- Dividers
- Paper (Wide & College Ruled)

## FOOD & HEALTH:

- Water Bottle
- Disinfectant Wipes
- Tissues
- Hand Sanitizer

## ADDITIONAL ITEMS:

- Backpack (no wheels)
- Lunch Box
- Earbuds & Headphones (not Bluetooth)
- Soft Case for Chromebook
- Zippered Binders

## CRAFT SUPPLIES:

- 24 pack Crayola Crayons
- Crayola Markers
- Crayola Colored Pencils
- Glue Sticks

## DROP OFF LOCATIONS:

**Jerrol's** - 111 E University Way | **KVH Hospital** - 603 S Chestnut St  
**Ellensburg Police Department** - 100 N Pearl St | **Kittitas County Commissioners Office** - 205 W 5th Ave STE 108 | **Gaylyn's Salon** - 311 N Main St.  
**CASA Office** - 421 N Pearl St Suite 208



You can always make a cash donation by scanning qr code



**UNTIL AUGUST 28TH**

